

Setting up your Source Connect

Source-Connect Pro requires a physical USB dongle device called an 'iLok' for copy-protection. This means you must have an iLok installed in a USB port in your computer and be registered as an iLok user at www.iLok.com, or you will not be able to launch and use Source-Connect Pro.



Purchasing an iLOK (Optional. Required for Pro only)

The iLok retails for around CND\$59.00. You can buy an iLok directly from iLok.com, or from stores and Pro music shops, such as:

www.iLok.com

Amazon.ca

Long & McQuade

Steve's Music

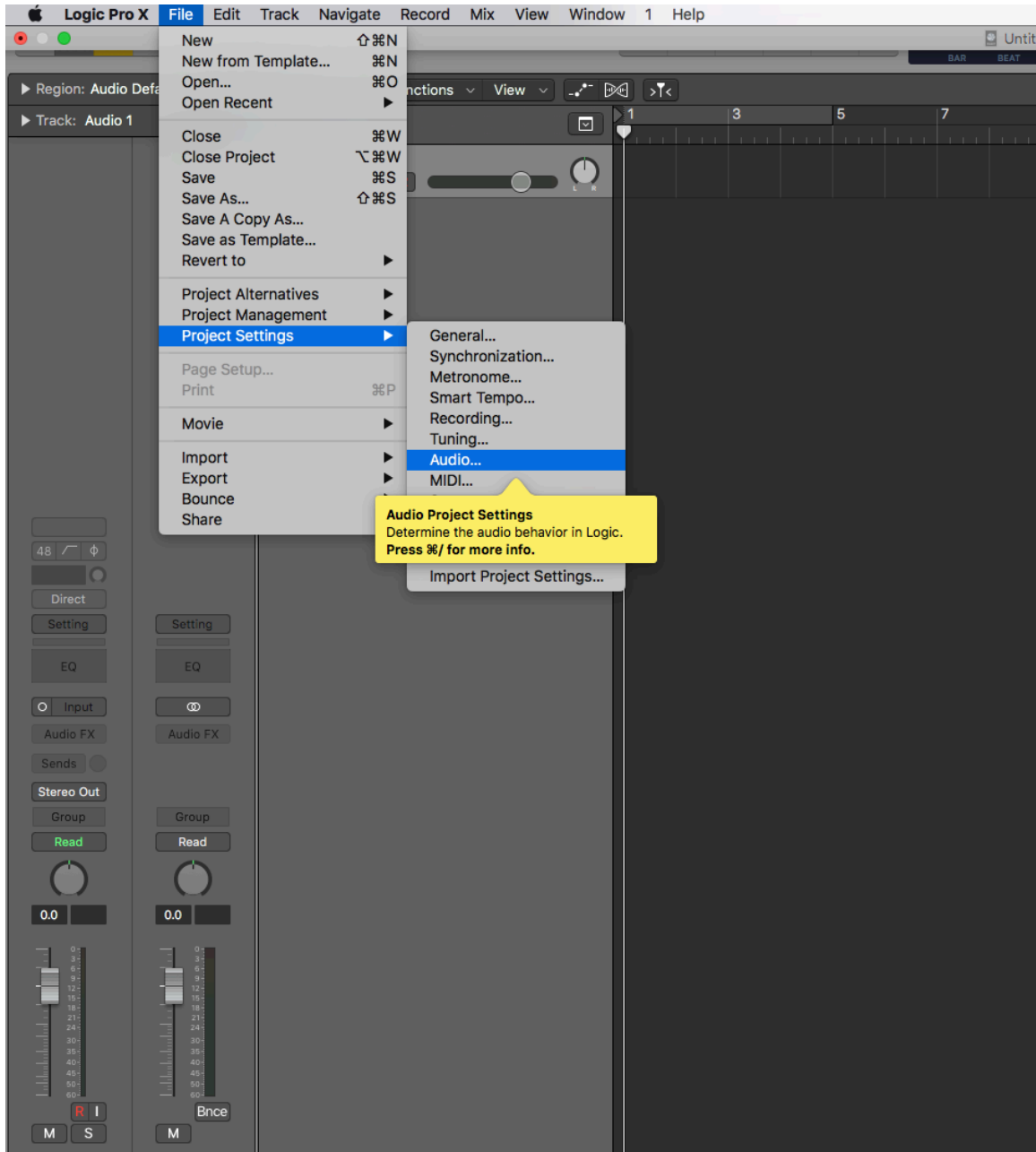
Alternatively, see your Pro audio dealer.

Register your iLok

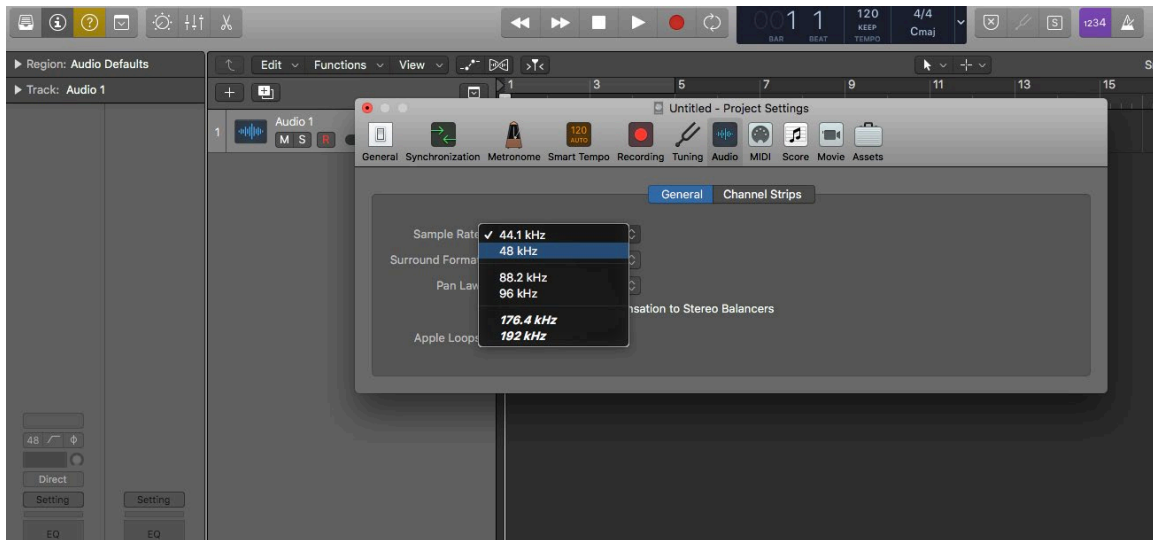
Once you have an iLok, you need to create an account at iLok.com and register your physical iLok with this account. Follow the instructions on the iLok.com website for details. You will use this account to receive licenses that allow you to launch Source-Connect Pro software. After you have set up an iLok account and have downloaded [Source-Connect...](#)

Create new session in [Logic](#) (or [Garageband](#), or other music editing software)

Under **file** menu (drop down menu in Logic) **select project settings** then **select audio**



Select 48Khz



Create a new audio track assigning the input and microphone accordingly. Make sure your track is armed (ready to record) and input monitoring is turned on (this enables you to monitor yourself and levels even when you are not recording); If you have a condenser mic make sure you are using phantom power

Don't Forget: you should always be recording in mono on the channel strip for single voice. It doesn't matter if you are outputting in stereo; if you are recording mono it is still essentially a mono track.

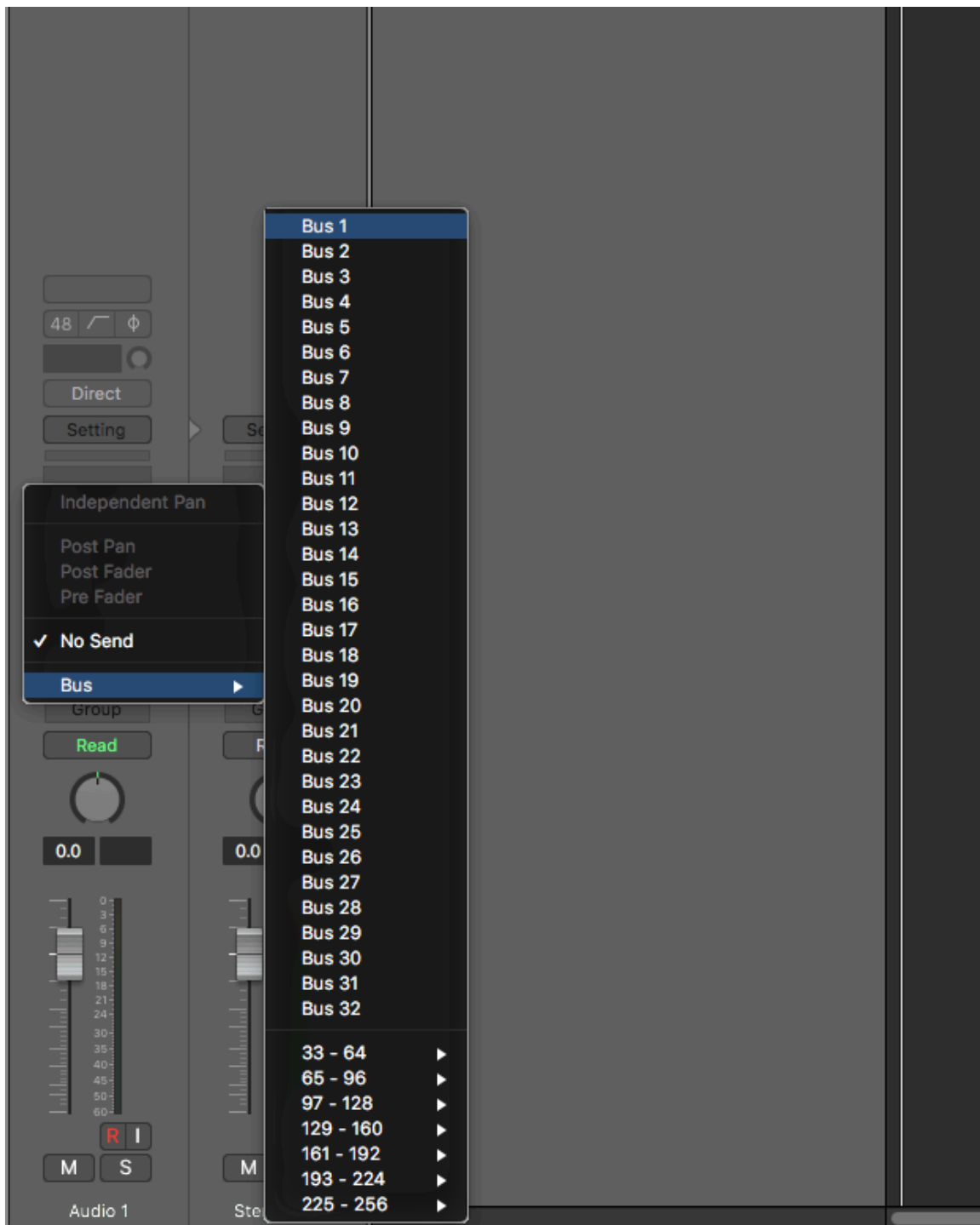
To link up Source Connect with your DAW...

Open the stand alone source connect software.

In Logic click the “sends slot” button on your left channel strip



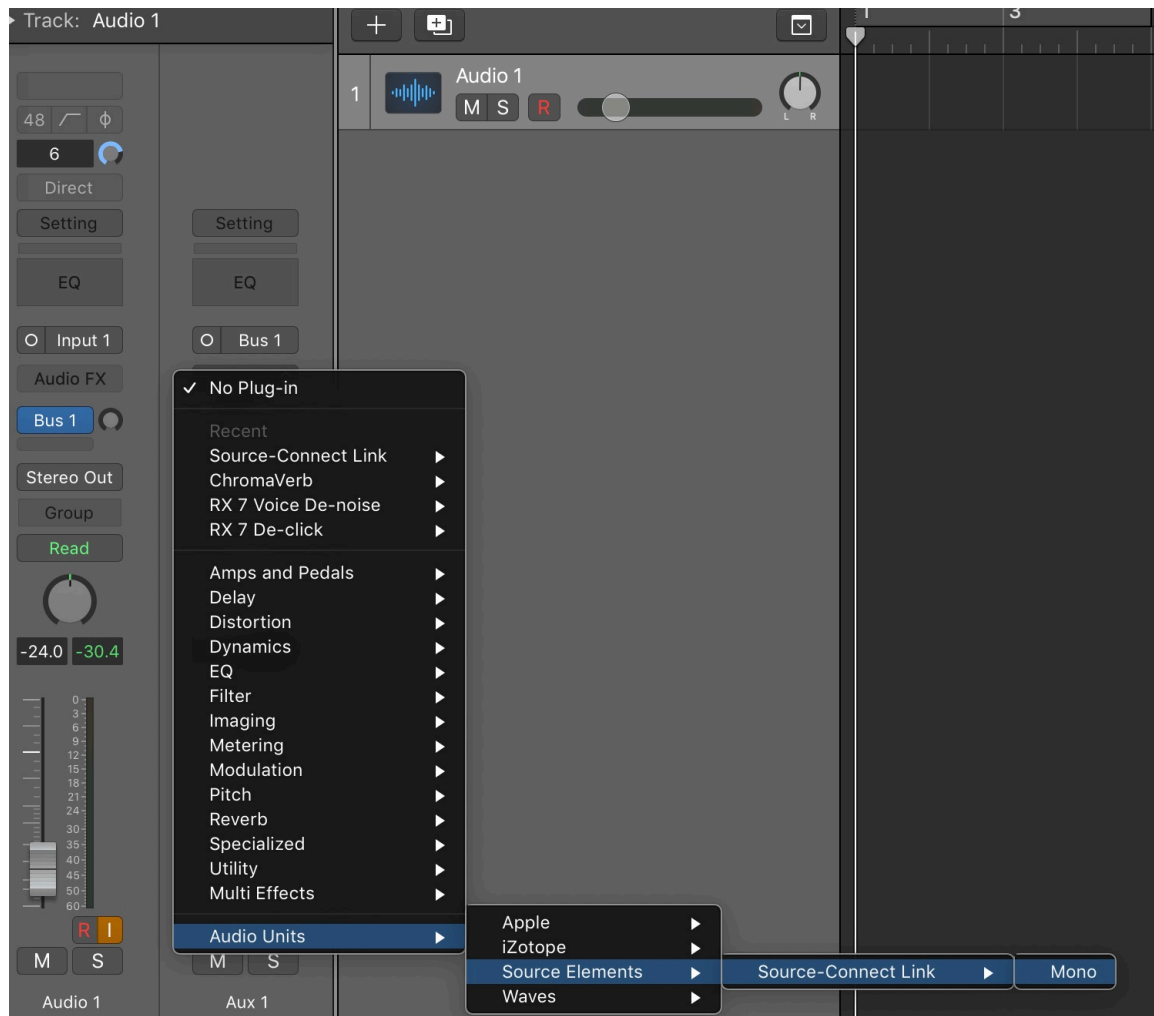
Select Bus 1



(this will automatically create an Aux Bus track for you. It will appear as the right inspector channel strip, next to the one you are inputting/recording on. You can also hit the “x” key to bring it up in your mixer)

On the Left Inspector Channel Strip in the pic below, to the right of the **blue button** that now says **Bus 1** (your “sends slot”) you will see a knob. Turn this up $\frac{3}{4}$ so you can get signal to the aux bus

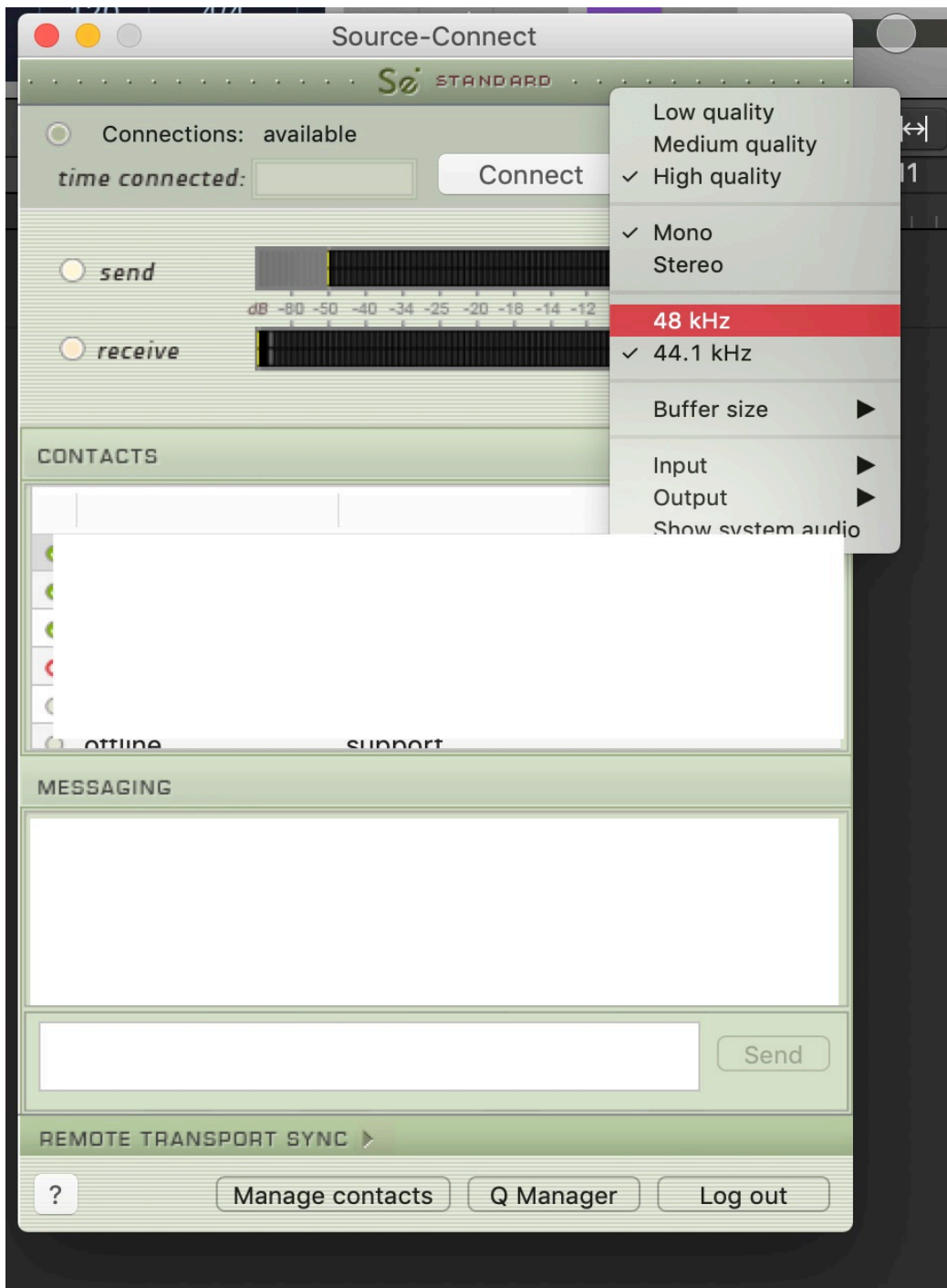
On the **Aux Channel Strip** (the right inspector channel strip) click the **Audio FX** button to select a plug in unit from the drop down menu –select the “source connect link” plug in.



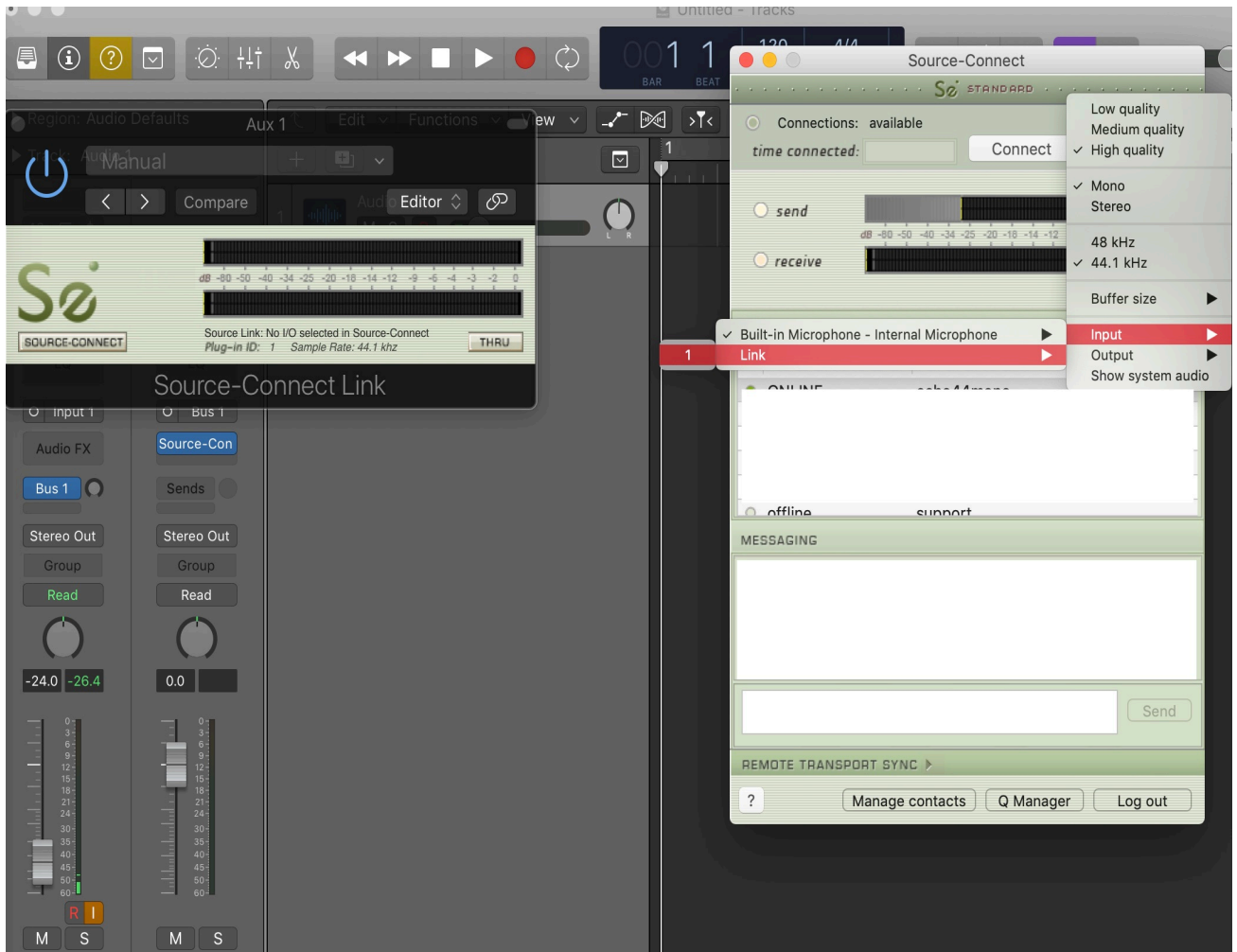
Once the plug is selected on the Aux Bus, it will launch and be ready to send signal from your DAW to the source connect stand alone software.

Log in to the stand alone version of Source Connect .

On the interface **select audio quality and set to 48Khz** from the drop down menu



Now under the same drop down menu you will **select Input and set it to Link 1**. Next **set output to Link 1** as well.



Hit Connect and choose mono test 48Khz to check your latency. Remember to enable input monitoring in you DAW so that you can hear yourself. The speed your own audio echoes back to you over the test link indicates your latency.

You are good to go.