

THE KIND OF WORK WILL YOU BE DOING

will determine the type of mic you need

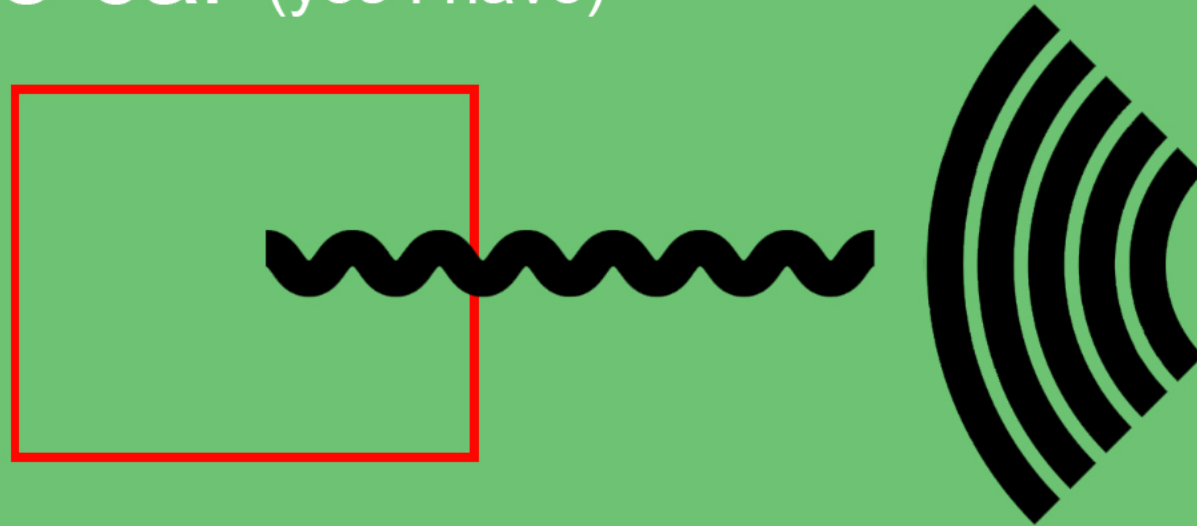
- animation
- commercial
- narration
- audio books
- promo
- imaging



WHERE WILL YOU BE RECORDING

will determine the type of sound-proofing needed

- closet
- private room
- full home studio
- the car (yes I have)



LEVEL OF EXPERTISE

will determine the software and support you need

- beginner
- intermediate
- advanced
- audio engineer/IT



DYNAMIC MICS



Shure SM7



Electro-Voice RE20



Audio-Technica BP40



Neumann BCM 705

CONDENSER MICS



TLM 102



TLM 103



Sennheiser 416



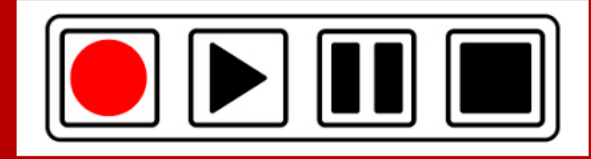
Neumann U87



Audio Technica 2050

Animation

- large diaphragm



Commercial

- large diaphragm/shotgun

Narration

- dynamic/large diaphragm/shotgun

Audio books

- dynamic/large diaphragm/shotgun

Promo

- dynamic/large diaphragm/shotgun

Imaging

- dynamic/large diaphragm/shotgun

INTERFACES



HEADPHONES

AKG

SENNHEISER

AUDIO-TECHNICA

ULTRASONIC

SONY

FOSTEX

BEYER DYNAMIC



What is your budget?

Low end broadcast quality...

mic - Audio-Technica AT2035	\$219ca
interface - Focusrite Scarlett Solo	\$159ca
software - Source Connect Standard	\$50ca/month
- DAW, Audacity (pc/mac)	free
headphones - Sennheiser HD280 Pro MkII	\$130ca
studio extras - mic stand, cables, pop filter	\$50ca
Total	\$1158ca

What is your budget?

High end broadcast quality...

mic - TLM 103	\$1430ca
interface - Universal Audio Apollo Twin	\$1199ca
software - Source Connect Standard	\$50ca/month
- DAW, Avid Pro Tools	\$869ca
headphones - Focal	\$399ca
studio extras - mic stand, cables, pop filter	\$140ca
Total	\$4637ca

To sum up...

- create a budget
- decide the bulk of your work (animation/commercial, etc.)
- choose where you will record (closet/home studio/portable)
- do you need sound-proofing or room treatments?
- pick a mic that will suit the bulk of your work
- pick an affordable interface with good quality a/d conversion
- is Source Connect worth your investment
- choose the best DAW for self-recording
- pop filter, cable and stand

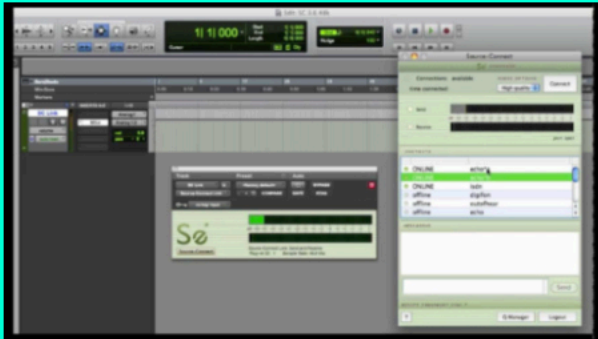
To sum up...

- **interface vs usb mic**
more diversity with interface allowing you to choose best mic
- **ipDTL vs Source Connect**
SC is more popular and has video sync, ipDTL can do video peer to peer and allows ISDN and phone patch
- **Pro Tools vs Logic X vs Reaper vs Twisted Wave**
Pro Tools is now \$300/per year for full usage
Logic X is a one time purchase \$279.99
Reaper is \$225 if you make more than \$20K per year
Twisted Wave online \$200/yr

Peer to peer connection

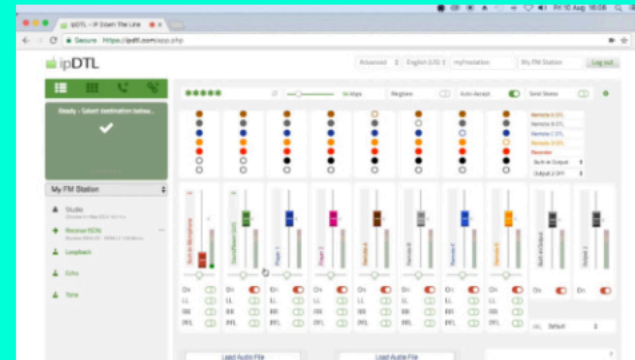
Source Connect

- low latency/remote video playback
- hard to setup for average person



ipDTL

- low latency/video conferencing
- ISDN option/phone patch option



ISDN

- obsolete/availability limited
- extremely expensive



Evercast

- new technology
- almost no latency/very expensive

